

# Exclusive

# *Showroom*

鑽石尊尚展廳

# D I A M O N D S



## **Hong Kong International Jewellery Show**

**16-20 February 2012**

**Hong Kong Convention and  
Exhibition Centre**



Your business · Our mission |

# Select Setting

The diamond business has a long and highly distinguished history, characterised by the discreet nature of its negotiations and the need for private viewing of quality stones. The Exclusive Showroom (Diamonds) answers the needs of today's diamond business people by offering a confidential and secluded environment, where exhibitors of elite diamonds can meet with well-informed buyers in privacy. Located at Meeting Rooms S221-S230 and S429-S430, the Exclusive Showroom (Diamonds) provides the appropriate setting for detailed examinations of high-quality stones and for private business discussions.



## RapNet – Diamond Search Kiosk

Buyers are invited to take advantage of the complimentary diamond search service at the RapNet Kiosk opposite Meeting Room S228 in the Exclusive Showroom (Diamonds) and at booth 3G-B28.

Designed to make your diamond buying at the Show easy – the kiosk enables you to search for specific diamonds that are located at the Show using the powerful RapNet search engine.

### Notice to Readers

This special leaflet is not a mail-order catalogue. The products are traded directly by the suppliers in large commercial quantities for import, re-export and wholesale purposes.

The Hong Kong Trade Development Council makes no representation or warranty regarding the companies, their products or the potential infringement of any intellectual property rights of any third parties and accepts no responsibility, liability or obligation, in addition to any of the statements, photographs or illustrations appearing in this special leaflet. Inclusion of any particular item does not mean that goods or services have the approval of or are endorsed by the Hong Kong Trade Development Council. It is recommended that normal precautions be taken before any business is transacted with any company. Correspondence concerning any alleged infringement of any design, copyright, patent, trademark or other intellectual property right should be addressed directly to the company, not the Hong Kong Trade Development Council.



S221A

## Japan Auction House Limited



Japan Auction House Limited is a Leading Auction House dealing in cut & polished diamonds and fine jewellery. The company is headquartered in Japan with branch offices around the world. Most of Japan Auction House Limited's inventory is made up of purchases from pawn shops, recycling shops and many other discounted and economical sources in Japan.

Japan Auction House Limited's offerings include a wide variety of certified and non-certified Star, Melee, Fancy shapes and cuts, and colours, ranging from 1 carat up, and fine diamond jewellery. The company's auctions are held in Japan and Hong Kong. As well as auctions, it offers an exclusive range of diamonds and jewellery through its booths at jewellery fairs around the world.



*Unit 902-903, 9th Floor, Hilder Centre, 2 Sung Ping Street  
Hung Hom, Kowloon, Hong Kong  
Tel: (852) 2376 2007  
Fax: (852) 2367 8373  
Email: [japanauctionhouse@gmail.com](mailto:japanauctionhouse@gmail.com)  
Website: [www.japanauctionhouse.com](http://www.japanauctionhouse.com)*

## **Royal Gem**



Royal Gem is a manufacturer of diamonds ranging from 2 to 50 carats, especially in White, Pink and Blue. Crafted by world-renowned polishers in Antwerp (Belgium) and Tel Aviv (Israel), Royal Gem continues to consistently supply some of the world's leading retailers with exquisite diamonds of all kinds. The company

has a first class reputation for quality and reliability: delivering unswerving excellence in a timely fashion. Apart from a thriving retail business, clients include leading designers and brand names, international jewellery manufacturers of repute, and collectors worldwide.

With offices in Tel Aviv, Antwerp, Napoli, Barcelona and Hong Kong, Royal Gem recognises the need for complete assurance that each and every purchase is of the finest quality, cut and polished to perfection. Marketing is accompanied by wholly reliable and discreet customer services, catering to present and future needs with the same professional approach. Whatever a client needs, Royal Gem can be relied upon to deliver.

*Diamond Exchange Diamond Tower, 12th Floor, Suite 76-78  
Ramat Gan 52520, Israel  
Tel: 972 (3) 5755 480  
Fax: 972 (3) 6723 434  
Email: [olivier@royalgem.com](mailto:olivier@royalgem.com)  
Website: [www.royalgem.com](http://www.royalgem.com)*



S222

## Sheetal (Far East) Limited

Established in 1985, Sheetal Group is one of the world's leading manufacturers of polished diamonds with annual sales of about 1.1 million polished carats. Sheetal provides highly differentiated products complemented by a wide suite of customer-focused services. Over the years, it has established a strong distribution network with some of the world's leading polished distributors, jewellery manufacturers and retailers, serving key diamond markets including the US, Hong Kong, Chinese mainland and India. Sheetal's polished range includes GIA Round 0.30 -10 carats, colours D-M, clarity IF-I1; Fancy-Cut (Princess, Pear, Marquise and Cushion); Fancy Yellow Diamonds; and Parcel: White, Brown, LC (0.01-0.80 carats).



*Room 1316, 13th Floor, Peninsula Square  
18 Sung On Street, Hunghom, Kowloon, Hong Kong  
Tel: (852) 2739 8299  
Fax: (852) 2739 9200  
Email: [reception.hongkong@sheetals.net](mailto:reception.hongkong@sheetals.net)  
Website: [www.sheetalgroup.com](http://www.sheetalgroup.com)*

## OJSC Alrosa

ALROSA accounts for more than 25 per cent of total global rough diamond output and for 97 per cent of rough diamonds produced in Russia. It has sufficient proven reserves to maintain the current level of quality diamond production for 25 years. About 95 per cent of its total rough diamond production is Gem and Near Gem quality.

ALROSA has direct long-term relationships with the world's main consumers of rough diamonds, with trading affiliates in Belgium, England, Israel, Hong Kong, the UAE and the US.

In 2010 ALROSA's aggregate rough diamond production was 34.3 million carats with rough diamond sales of USD3.5 billion. The company produces and sells about USD140 million polished diamonds per year.



In 2011 rough diamond sales of ALROSA exceeded USD4 billion.

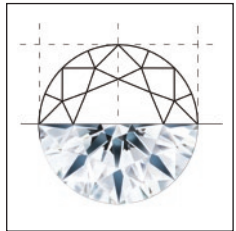


**KAPU GEMS**  
Finest Craftsman of large-sized diamonds

**S224**

## **Kapu Gems**

Kapu specialises in manufacturing large-sized premium diamonds in Rounds and Fancy shapes in sizes 0.30 to 10.00 carats and above. With two state-of-the-art factories, Kapu can assure customers of a consistent supply of large-sized diamonds at the best competitive prices as the company receives direct rough supply from Rio Tinto, BHP Billiton and Harry Winston diamonds. More than 58% of sales are made through the website [www.kapugems.com](http://www.kapugems.com).



### Product specialisation:

Kapu specialises in manufacturing large-sized solitaires in Rounds and Fancy shapes:

- Sizes 0.30 to 10.00 carats and above
- D to J colours and FL to I2 clarities
- Inventory of more than 3,000 GIA certified stones
- More than 90% of total production comprises EX EX EX cut diamonds - resulting in an excellent level of fire and brilliance in the diamonds
- Customers can easily save valuable time and effort because all their stones are GIA, IGI or HRD certified

*Unit 2, 2nd Floor, Chevalier House, 45-51 Chatham Road South  
Tsim Sha Tsui, Kowloon, Hong Kong  
TeleFax: (852) 2957 8857  
Mobile: (852) 9754 4699  
Email: [yogesh@kapugems.com](mailto:yogesh@kapugems.com)  
Website: [www.kapugems.com](http://www.kapugems.com)*



**DHARAM CREATIONS**

Shaping a better tomorrow

**S225**

## **Dharam Creations (HK) Limited**

Dharam Creations (HK) Ltd is a marketing arm of Dharmanandan Diamonds Pvt Ltd, which is one of the largest diamond manufacturers and DTC sightholders in the world. Dharmanandan Diamonds has adopted a set of core values, high ethical standards and business principles to ensure that its business is free from any malpractice.



The group has strategic marketing networks at major diamond centres like India, Hong Kong, Belgium and the US. It offers a wide range of diamonds sized from

1 pt to 5 cts in D to cape colour, IF to I3 clarity and in different shapes such as Round, Princess, Pears, Marquise and other fancy shapes. It also makes jewellery including rings, earrings, necklaces, pendants, bracelets and custom jewellery.



*Unit 7, 1st Floor, Chevalier House, 45-51 Chatham Road South  
Tsim Sha Tsui, Kowloon, Hong Kong  
Tel: (852) 2723 1466  
Fax: (852) 2722 6214  
Email: [support@dharamhk.com](mailto:support@dharamhk.com)  
Website: [www.dharamhk.com](http://www.dharamhk.com)*





S226

## **A.A. Rachminov Diamonds (Asia) Limited**

Fifty years ago, the Rachminov brothers began manufacturing high-end diamonds and for the past 40 years have been operating in all of the world's most important diamond centres and with the most prestigious jewellery retailers.

Rachminov specialises in fancy and round-shaped diamonds, 0.70 carats up, in white and fancy colours, and clarity grades ranging from SI2 to Flawless. An extensive selection of special and rare large

stones is available on request. One of Israel's 'top 20' diamond exporters, the company has offices in Israel, Hong Kong, Shanghai, Taiwan, Belgium and Italy.



*Room A, 16th Floor, Entertainment Building  
30 Queen's Road Central, Central, Hong Kong  
Tel: (852) 2526 5885  
Fax: (852) 2526 5887  
Email: [info@aarachminov.com.hk](mailto:info@aarachminov.com.hk)  
Website: [www.aarachminov.com](http://www.aarachminov.com)*



S227

## **Kiran Exports (Hong Kong) Ltd**

Kiran is the world's largest manufacturer of white diamonds below 1 carat. Focusing on its core strength of manufacturing, Kiran has carved a niche for its self in the mass luxury segment. With 120 specialised dedicated factories, the company has 24,000 skilled craftsmen and professionals under its umbrella, adding value to its massive annual production of over 1.37 million carats of polished diamonds.



Kiran has offices at prime business locations. The company's product range covers finely cut and crafted natural diamonds in seven different shapes: Round, Marquise, Pear, Princess, Emerald, Oval and Heart. These shapes are available in several different colours, qualities and sizes up to two carats.

*Room 607-08, 6th Floor, Hilder Centre, 2 Sung Ping Street  
Hunghom, Kowloon, Hong Kong  
Tel: (852) 2366 2488  
Fax: (852) 2739 8288  
Email: [infohk@kirangems.com](mailto:infohk@kirangems.com)  
Website: [www.kirangems.com](http://www.kirangems.com)*



## **Net Japan - Park Auction Limited**

Net Japan-Park Auction Limited established its Hong Kong operations in 2010. The parent company is a major exporter of loose diamonds and has developed major markets in the Chinese mainland, Hong Kong, India and other Asian countries and regions.

Net Japan-Park Auction Limited will conduct its fifth auction of loose diamonds to be held in the HKSAR.

The company is contactable by email at [info@netjapan-parkauction.com](mailto:info@netjapan-parkauction.com). The website is [www.netjapan-parkauction.com](http://www.netjapan-parkauction.com)



*Room 701, 7th Floor, On Hong Commercial Building  
145 Hennessy Road, Wan Chai, Hong Kong  
Tel: (852) 6686 3158  
Email: [parkdiam@gmail.com](mailto:parkdiam@gmail.com)  
Website: [www.netjapan-parkauction.com](http://www.netjapan-parkauction.com)*



S229

## Bhavani Hong Kong Limited



Bhavani Hong Kong is a marketing affiliate of Bhavani Gems, an importer, manufacturer and exporter of quality diamonds in Round, Princess and Fancy shapes.

Bhavani Hong Kong is proud of its consistent quality services. The company has a strong reputation for trust and reliability, for adopting technological advances and for putting efforts into intensive marketing efforts to keep its leading position in the local market. It is building on its success to further develop markets in surrounding regions.

- 0.30 to 3.00 carats & above
- D to J colors
- FL to I2 clarities



Unit 404, 4th Floor, Chevallier House, 45-51 Chatham Road South  
Tsim Sha Tsui, Kowloon, Hong Kong  
Tel: (852) 2368 6769  
Fax: (852) 2368 6979  
Email: [alpesh@bhavanihk.com](mailto:alpesh@bhavanihk.com)  
Website: [www.bhavanigems.com](http://www.bhavanigems.com)



**DIAROUGH**  
Hong Kong Ltd.

## **Diarough (Hong Kong) Ltd.**

Part of the Diarough N.V Group, Diarough Hong Kong enjoys an excellent reputation throughout Asia for its role in the diamonds industry. The company is highly respected not only for its exclusive, breathtaking diamonds, but also for cutting edge service to clients, meticulous attention to every detail and on the spot delivery in exact accord with client's needs. Part of the secret is to have available a vast array of diamonds: including high-end goods; GIA, HRD, AGS and IGI laser encrypted certified stones from 0.30 to 1.00 carat; and commercial production from VS to SI, from 0.005 to 2.00 carat in Rounds, Princess, Marquises and taper Baguettes.

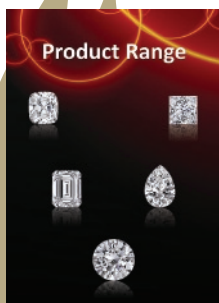


**BIG**  
in  
**White.**

Diarough Hong Kong also offers three branded programs: Colours of Life, for white and natural, fancy coloured diamonds; Fire of North, for diamonds whose journey starts in the deep, remote recesses of North America; and Fire of Africa, for diamonds of rare beauty and stunning scintillation.

*Room 1103, Tower B, Hunghom Commercial Centre  
37 Ma Tau Wai Road, Hunghom, Kowloon, Hong Kong  
Tel: (852) 2721 2682  
Fax: (852) 2721 6576  
Email: [adv@diaroughhk.com](mailto:adv@diaroughhk.com)  
Website: [www.diarough.com](http://www.diarough.com)*

## Venus Jewel



Established in 1969, Venus Jewel is a globally trusted solitaire supplier, renowned for its commitment to excellence, transparent business practices and ethical values. The company is a precision manufacturer of premium Round and Fancy shaped diamonds, 0.50 - 15.00 carats in size, D-K colors and FL-I2 clarities.

Besides enjoying direct rough diamond supply from reputed miners like the DTC, Rio Tinto & BHP Billiton, the company is also the official supplier of DTC's Forevermark, BHP Billiton's CanadaMark, and Rio Tinto Diamonds' Mine of Origin programmes.

Among Venus Jewel's various unique services are: Venus-Grading-System® (VGS®), Venus-Grading-Report (VGR), Diamond-DNA, Preferred-Diamond-Selection (PDS), Look & Bid (L&B), Laser-Inscription, Matching-Pair, Venus-Diamond-Layouts (VDL) and Venus-Exclusive-Diamonds (VED).

901-902 Panchratna, Mama Parmanand Marg (Opera House)  
Mumbai-400004, India  
Tel: 91 (22) 2367 4444  
Fax: 91 (22) 2367 3333  
Email: [hkshow@venusjewel.com](mailto:hkshow@venusjewel.com)  
Website: [www.venusjewel.com](http://www.venusjewel.com)



## Dianco (HK) Ltd.

Dianco (HK) Ltd. is an associated company of D. Navinchandra Exports Pvt. Ltd. (D. Navin), founded by Shantibhai Mehta and Navinbhai Mehta four decades ago.

With a steady supply of rough from three of the leading mining companies of the world - Rio Tinto, Alrosa and BHP Billiton - the company has a clear competitive advantage in the polished diamond market. Through its head office in Mumbai and marketing affiliates in Antwerp, Dubai, Hong Kong, New Delhi, Hyderabad and Kolkata, the company also has access to major diamond markets around the world.



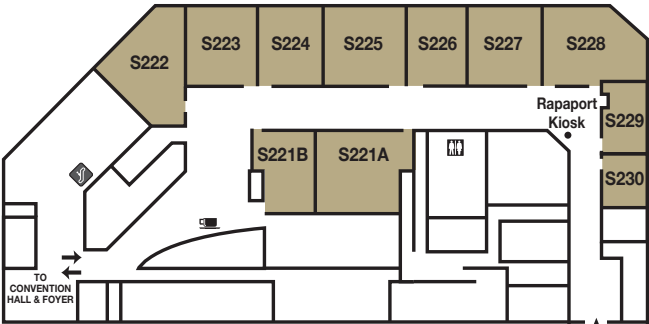
The vision of the founders is now supported by the zeal and business acumen of the next generation, Samir Mehta, Manoj Mehta and Ajesh Mehta. Recognised with various awards from the Gem & Jewellery Council for outstanding export performance, D. Navinchandra Exports Pvt. Ltd. believes that there is nothing more precious than the faith of a satisfied customer.

### Diamond Portfolio :

- Round White ½ pts to 50 pts.
- OWLB and OWLC 0.01 ct to 0.17 ct.
- Dossiers GIA certified.
- Certified goods – GIA, HRD and IGI from 0.90 pts to 3 carats.

Unit J2, 11th Floor, Kaiser Estate Phase 2, 51 Man Yue Street  
 Hunghom, Hong Kong  
 Tel: (852) 3904 2596  
 Fax: (852) 3904 2594  
 Email: [sales@dianco.com.hk](mailto:sales@dianco.com.hk)  
 Website: [www.dnavin.com](http://www.dnavin.com)

# Floor Plan



## Legend



Toilet

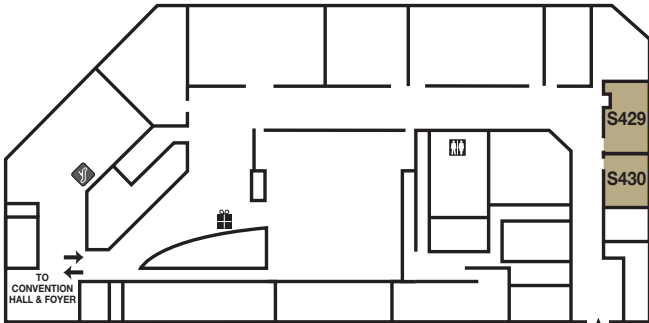


Escalator



Coffee Redemption Counter

## Meeting Rooms S221-S230



## Legend



Toilet



Escalator



Gifts Redemption Counter

## Meeting Rooms S429-S430