

## Seminar on "Spinel: A Gemstone on the Rise"

### 「珠寶業界新寵 — 尖晶石」研討會

- Date 日期 : 7/3/2010 (Sunday 星期日)  
Time 時間 : 2:30pm – 3:30pm  
Venue 地點 : Meeting Room S221, HKCEC  
香港會議展覽中心會議室 S221  
Speaker 講者 : Dr. Michael S. Krzemnicki, Director of the Swiss Gemmological Institute SSEF  
瑞士寶石學院 董事 Dr. Michael S. Krzemnicki  
Language 語言 : English (simultaneous interpretation in Putonghua will be provide)  
英語 (附設普通話即時傳譯服務)  
Remarks 備註 : Free Admission 費用全免

#### Biography of Speaker 講者簡介

As an internationally known gemmologist, Dr Krzemnicki started his gemmological career shortly after completion of his PhD thesis in mineralogy in 1996. Apart from working at the SSEF, he is lecturing at the Earth Sciences Department of the University Basel, and is also guest speaker at gemmological seminars worldwide. He has published numerous articles on gemstone sources, new gemstones, and on analytical methods in all major gemmological journals.

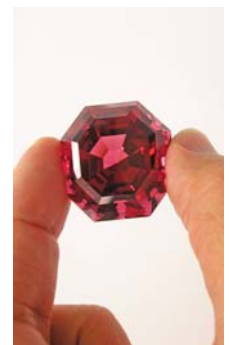
國際著名的寶石學家 Dr. Michael S. Krzemnicki 是「瑞士寶石學院」的董事。他于 1996 年完成礦物學博士論文不久後，便開始了他在寶石學院的職業生涯。除了在「瑞士寶石學院」工作，Dr. Krzemnicki 還在巴塞爾大學的地球科學系任教。世界各地的寶石研討會經常邀請 Dr. Krzemnicki 為演講嘉賓。他在各種主要寶石刊物中發表了大量關於寶石來源、新寶石和分析法的文章。



#### Presentation Abstract 演講內容簡介

Spinel has always been among the most beautiful and valuable gems. Recently, we observe a new trend for spinels in high-end jewellery. Certainly also due to the fact, that spinel generally is not treated. Found in a wide range of colours, from saturated red to pink, violet to lavender and light blue to cobalt blue, these stones are also often quite pure. Combined with their hardness, lustre and brilliance, they may rival the beauty of the best rubies. The presentation focuses on exceptional spinels from Burma, Tajikistan, and other sources, recently tested at the Swiss Gemmological Institute SSEF and presents our ongoing research on spinel.

尖晶石是一種美麗和珍貴寶石，一般都不經過處理。近年，尖晶石用於高檔珠寶已成新趨勢。尖晶石的顏色範圍很廣，從鮮紅到粉紅，紫羅蘭到淡紫，淡藍到彩藍，而且寶石淨度很高。如從硬度、光澤和色澤各方面條件看來，尖晶石亦能跟優質的紅寶石媲美。講者將講述「瑞士寶石學院」對來自緬甸、塔吉克斯坦和其他產地之尖晶石進行的最新測試，以及該學院對尖晶石的研究。



#### Programme 程序表

|                 |   |
|-----------------|---|
| 2:15pm – 2:30pm | Guest Registration 登記   |
| 2:30pm – 3:20pm | Seminar on "Spinel: A Gemstone on the Rise" 「珠寶業界新寵 — 尖晶石」研討會 |
| 3:20pm – 3:30pm | Q & A Session 問答時段  |

\*The Organiser reserves the rights to change the programme without prior notice.

\*主辦機構保留對節目調動及更改之權利而不作另行通告