

Exclusive

鑽石尊尚展廳

Showroom

D I A M O N D S



Hong Kong International Jewellery Show

30
30TH EDITION 第三十屆

5-9 March 2013

**Hong Kong Convention and
Exhibition Centre**

Your business · Our mission |



Perfect Gems

The diamond business requires a confidential approach, with private viewing of quality stones and negotiations away from the general bustle of the fairground. The **Exclusive Showroom (Diamonds)** is designed with these specific needs in mind, as it offers an intimate and secluded environment in which exhibitors of top quality diamonds can meet buyers in a quiet and private atmosphere. The Exclusive Showroom (Diamonds) is located in Meeting Rooms S221-S230, S429-S430, with their professional and secluded environment offering the perfect setting for detailed examinations of the diamonds on offer and privacy for negotiations over business terms.

RAPNET®
DIAMOND TRADING NETWORK

RapNet – Diamond Search Kiosk

Attention Buyers – simplify your Diamond buying with RapNet's Diamond Search Service!

Don't wander from booth to booth; search for and find the diamonds you are looking for and get a list of suppliers with their booth location. Make the best use of your time at the show by using the free Rapnet Diamond search service.

Search available at the RapNet Kiosk, in the entrance of Exclusive Showroom (Diamonds) Level 2, or at Rapaport Booth 3G-B42 Level 3 or online at www.rapnet.com/showlistings

Notice to Readers

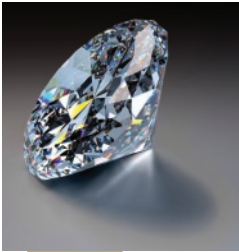
This special leaflet is not a mail-order catalogue. The products are traded directly by the suppliers in large commercial quantities for import, re-export and wholesale purposes.

The Hong Kong Trade Development Council makes no representation or warranty regarding the companies, their products or the potential infringement of any intellectual property rights of any third parties and accepts no responsibility, liability or obligation, in addition to any of the statements, photographs or illustrations appearing in this special leaflet. Inclusion of any particular item does not mean that goods or services have the approval of or are endorsed by the Hong Kong Trade Development Council. It is recommended that normal precautions be taken before any business is transacted with any company. Correspondence concerning any alleged infringement of any design, copyright, patent, trademark or other intellectual property right should be addressed directly to the company, not the Hong Kong Trade Development Council.

Room S221-A

RAPAPORT® | AUCTIONS

Rapaport Hong Kong Limited



The Rapaport Group is an international organization providing first-class, added-value services that support the development of free, fair, efficient and competitive diamond and jewellery markets. Established in 1976, the Rapaport Group has over 14,000 clients in more than 100 countries.

Rapaport Auctions and Buy Now sales for melee and single stones provide an excellent opportunity for the diamond trade to buy and sell diamonds at cash prices. The large quantities and wide variety of merchandise attract competitive bids from a broad range of local and international buyers. Rapaport Auctions is committed to addressing the needs of the international diamond community for enhanced liquidity while presenting unprecedented buying opportunities. Monthly auctions are held in the group's trading headquarters in New York, Hong Kong, Belgium, Israel, and in other global locations.



Unit 2206, Kinwick Centre, 32 Hollywood Road,
Central, Hong Kong
Tel: (852) 2805 2620
Fax: (852) 2805 2605
Email: ofira@diamonds.net
Website: www.diamonds.net

Royal Gem



Royal Gem Group is a manufacturer of diamonds ranging from 2 to 50 carats, specialising in high quality white and natural fancy coloured diamonds. The group comprises two companies: Royal Gem fine diamonds and Antwerp Cut. With diamonds crafted by world-renowned polishers in Antwerp (Belgium) and Tel Aviv (Israel), Royal Gem Group

consistently supplies to numerous world's leading retailers exquisite diamonds of all kinds. The group has a first-class reputation for quality and reliability, delivering unswerving excellence in a timely fashion. As well as operating a thriving retail business, clients include leading designer and brand names, international jewellery manufacturers of repute, and collectors worldwide.

With offices located in the world's major diamond centres – Antwerp, Tel Aviv, New York, Hong Kong, Barcelona & Napoli – Royal Gem Group recognises the need for complete assurance that each and every purchase is of the finest quality, polishing and cut. Marketing is accompanied by wholly reliable and discreet customer services, catering to present and future needs with the same professional approach. Whatever a client needs, Royal Gem Group can be relied upon to deliver.



Room S222

Sheetal (Far East) Limited

Established in 1985, Sheetal Group is one of the world's leading manufacturers of polished diamonds with annual sales of about 1.1 million polished carats. Sheetal provides highly differentiated products complemented by a wide suite of customer-focused services.

Over the years, it has established a strong distribution network with some of the world's leading polished distributors, jewellery manufacturers and

retailers, serving key diamond markets including the US, Hong Kong, Chinese mainland and India. Sheetal's polished range includes GIA Round 0.30 -10 carats, colours D-M, clarity IF-I1; Fancy-Cut (Princess, Pear, Marquise and Cushion); Fancy Yellow Diamonds; and Parcel: White, Brown, LC (0.01-0.80 carats).



Room 1316, 13th Floor, Peninsula Square
18 Sung On Street, Hung Hom, Kowloon, Hong Kong
Tel: (852) 2739 8299
Fax: (852) 2739 9200
Email: reception.hongkong@sheetals.net
Website: www.sheetalgroup.com



OJSC ALROSA

Open Joint Stock Company ALROSA (OJSC ALROSA), a state-controlled Russian company, is one of the largest diamond mining companies accounting for more than 25% of the total global rough diamond output. It is one of the World's leaders in diamond exploration, mining, sales of rough diamonds and diamond manufacturing.



In 2011 OJSC ALROSA's aggregate rough diamond production amounted to 34.6 million carats with rough and polished diamonds sales of USD 4.454 billion.

OJSC ALROSA is developing a new distribution network based on a combination of long-term partnerships with major purchasers of rough and polished diamonds and regional diversification of sales.





KAPU GEMS
Finest Craftsman of large-sized diamonds

Room S224

Kapu Gems



Kapu Gems specialises in manufacturing large-sized premium diamonds in Round and Fancy shapes from 0.30cts to 10cts and above. The company has an inventory of more than

3,000 GIA certified stones in colours D and J and clarities FL to I2. More than 90 per cent of total production comprises EX EX EX cut diamonds, resulting in an excellent level of fire and brilliance in the stones.

With its state-of-the-art factory and direct rough supply from all the leading mines (such as Harry Winston, BHP Billiton, Rio Tinto, Diamdel (DTC) and Alrosa). Kapu Gems can assure its international customers based in more than 30 countries of a consistent supply of polished diamonds at competitive prices.

Kapu Gems supplies high-powered digital images and Hearts & Arrows images of its available diamonds. An Early Bird System (EBS) and Offer system helps customers procure preferred diamonds at competitive prices.



Unit 2, 2nd Floor, Chevalier House, 45-51 Chatham Road South
Tsim Sha Tsui, Kowloon, Hong Kong
Tel: (852) 9754 4699
Fax: (852) 2957 8857
Email: yogesh@kapugems.com
Website: www.kapugems.com



DHARAM CREATIONS

Shaping a better tomorrow

Room S225

Dharam Creations (HK) Limited

Dharam Creations (HK) Limited is a marketing arm of Dharmanandan Diamonds Pvt Ltd, the largest diamond manufacturer and DTC sight holder. The group has more than 25 years' experience in the diamond industry.



Dharmanandan Diamonds offers a wide range of diamonds, sizes from 0.01 cts to 5.00 cts, with color starting from D to cape color and with clarity ranging from IF to I3. Shapes include Round, Princess, Pears, Marquise and other fancy shapes. Dharam's

products are also available with world renowned lab certificates such as GIA & HRD.

Dharmanandan Diamonds also makes exclusive jewellery such as rings, earrings, necklaces, pendants and bracelets. The group is committed to delivering full satisfaction in its customer services, offering consistent, high quality and reliable products. The group has strategic marketing networks in major diamond centers including India, Hong Kong, Belgium and the USA from which it serves its international customer base.

It has adopted a set of core values, high ethical standards and business principles to ensure that its business is free from any malpractice.

**Unit 7, 1st Floor, Chevalier House, 45-51 Chatham Road South
Tsim Sha Tsui, Kowloon, Hong Kong**

Tel: (852) 2723 1466

Fax: (852) 2722 6214

Email: support@dharamhk.com

Website: www.dharamhk.com



Room S226

A.A Rachminov Diamonds (Asia) Limited

Fifty years ago, the Rachminov brothers began manufacturing high-end diamonds and for the past 40 years have been operating in all of the world's most important diamond centres and with the most prestigious jewellery retailers.

Rachminov specialises in fancy and round-shaped diamonds, 0.70 carats up, in white and fancy colours, and clarity grades ranging from SI2 to Flawless. An extensive selection of special and rare large

stones is available on request. One of Israel's 'top 20' diamond exporters, the company has offices in Israel, Hong Kong, Shanghai, Beijing, Taiwan, Belgium and Italy.



Room A, 16th Floor, Entertainment Building
30 Queen's Road Central, Central, Hong Kong
Tel: (852) 2526 5885
Fax: (852) 2526 5887
Email: info@aarachminov.com.hk
Website: www.aarachminov.com



Room S227

Kiran Exports (Hong Kong) Ltd

Kiran is India's premier diamantaire, and is the world's largest manufacturer of white diamonds (below 1.5 cts). The company has 138 specialised diamond manufacturing units and a trained and dedicated work force of 31,000 personnel, processing over 5.7 million carats of rough stones to yield over 1.6 million carats of polished diamonds each year. The company offers a vast range of certified (0.30cts – 2.50cts) and non-certified Kiran Diamonds. It has offices in Mumbai, Antwerp, the Chinese mainland, Dubai, Hong Kong and New York.



Kiran has received top export performance awards (The Highest Exporter of Cut & Polished Diamonds (DTC Category) and The Highest Importer of Cut & Polished Diamonds in Belgium (Europe category)) from The Gems and Jewellery Export Promotion Council of India (Govt. Of India body) for every year since 2007-08. Kiran Jewelry also won the Highest Exporter award for Export of Studded Jewellery in 2011-12 and the 2nd Highest Exporter award in 2009-10 and 2010-11.

■ Room 607-08, 6th Floor, Hilder Centre, 2 Sung Ping Street
Hung Hom, Kowloon, Hong Kong
Tel: (852) 2366 2488
Fax: (852) 2739 8288
Email: infohk@kirangems.com
Website: www.kirangems.com



Room S228

Net Japan-Park Auction Limited

Net Japan-Park Auction Limited established its Hong Kong operations in 2010. The parent company is a major exporter of loose diamonds and has developed major markets in the Chinese mainland, Hong Kong, India and other Asian countries and regions.



Net Japan-Park Auction Limited is pleased to announce that its 7th Diamond Auction is held in Booth S228 at the HKTDC Hong Kong International Jewellery Show 2013.



- Room 701, 7th Floor, On Hong Commercial Building
145 Hennessy Road, Wan Chai, Hong Kong
Tel: (852) 6686 3158
Email: parkdiam@gmail.com
Website: www.netjapan-parkauction.com



TM

Room S229

Bhavani Hong Kong Limited



Bhavani Hong Kong is a marketing affiliate of Bhavani Gems, an importer, manufacturer and exporter of quality diamonds in Round, Princess and Fancy shapes.

Bhavani Hong Kong is proud of its consistent quality services. The company has a strong reputation for trust and reliability, for adopting technological advances and for putting efforts into intensive marketing efforts to keep its leading position in the local market. It is building on its success to further develop markets in surrounding regions.

- 0.30 to 3.00 carats & above
- D to J colors
- FL to I2 clarities



Unit 404, 4th Floor, Chevalier House, 45-51 Chatham Road South
Tsim Sha Tsui, Kowloon, Hong Kong
Tel: (852) 2368 6769
Fax: (852) 2368 6979
Email: alpesh@bhavanihk.com
Website: www.bhavanigems.com



Room S230

Diarough (Hong Kong) Limited

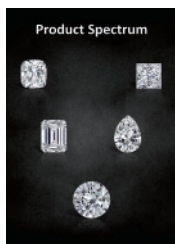
Part of the Diarough N.V Group, Diarough Hong Kong enjoys an excellent reputation throughout Asia for its role in the diamonds industry. The company is highly respected not only for its exclusive, breathtaking diamonds, but also for cutting edge service to clients, meticulous attention to every detail and on the spot delivery in exact accord with client's needs. Part of the secret is to have available a vast array of diamonds: including high-end goods; GIA, HRD, AGS and IGI laser encrypted certified stones from 0.30 to 1.00 carat; and commercial production from VS to SI, from 0.005 to 2.00 carat in Rounds, Princess, Marquises and taper Baguettes.



Diarough Hong Kong also offers three branded programs: Colours of Life, for white and natural, fancy coloured diamonds; Fire of North, for diamonds whose journey starts in the deep, remote recesses of North America; and Fire of Africa, for diamonds of rare beauty and stunning scintillation.

■ *Unit 1103, 11/F, Tower B, Hung Hom Commercial Centre
37 Ma Tau Wai Road, Hung Hom, Kowloon, Hong Kong
Tel: (852) 2721 2682
Fax: (852) 2721 6576
Email: adv@diaroughhk.com
Website: www.diarough.com*

Venus Jewel



Established in 1969, Venus Jewel is a globally trusted solitaire supplier, renowned for its commitment to excellence, transparent business practices and ethical values.

The company is a precision manufacturer of premium Round and Fancy shaped diamonds, 0.50 - 20.00 carats in size, in D-K colours and with clarities ranging from FL to I2.

In addition to enjoying direct rough diamond supply from reputable miners like the DTC, Rio Tinto & BHP Billiton, the company is also the official supplier of the DTC's Forevermark, and Rio Tinto Diamonds' Mine of Origin programmes.

Among Venus Jewel's various unique services are Venus Grading System® (VGS®), Venus Grading Report (VGR), Diamond DNA, Preferred Diamond Selection (PDS), Look & Bid (L&B), Laser Inscription, Matching Pair, Venus Diamond Layouts (VDL) and Exclusive Diamond Selection (EDS).

■ EC-5021/22, Bharat Diamond Bourse, Bandra Kurla Complex,
Bandra (E), Mumbai 400 051, India
Tel: 91 (22) 2672 0000 / 91 (22) 2367 4444
Fax: 91 (22) 2367 3333
Email: hkshow@venusjewel.com
Website: www.venusjewel.com



Room S430

Dianco (HK) Limited

Dianco (HK) Limited is an associated company of D. Navinchandra Exports Pvt. Ltd. (D. Navin), founded by Shantibhai Mehta and Navinbhai Mehta four decades ago.

With a steady supply of rough from four of the leading mining companies of the world - DTC, Rio Tinto, Alrosa and BHP Billiton - the company has a clear competitive advantage in the polished diamond market. Through its head office in Mumbai and marketing affiliates in Antwerp, Dubai, Hong Kong, New Delhi, Hyderabad and Kolkata, the company also has access to major diamond markets around the world.



The vision of the founders is now supported by the zeal and business acumen of the next generation, Samir Mehta, Manoj Mehta and Ajesh Mehta. Recognised with various awards from the Gem & Jewellery Council for outstanding export performance, D. Navinchandra Exports Pvt. Ltd. believes that there is nothing more precious than the faith of a satisfied customer.

Diamond Portfolio :

- Round White $\frac{1}{2}$ pts to 50 pts ranging from VVS to I3.
- OWLB and OWLC 0.01 ct to 0.17 ct.
- Dossiers GIA certified.
- Certified goods – GIA, HRD and IGI from 0.90 pts to 3 carats.

Unit J2, 11th Floor, Kaiser Estate Phase II, No. 51 Man Yue Street
Hung Hom, Kowloon, Hong Kong
Tel: (852) 3904 2596
Fax: (852) 3904 2594
Email: sales@dianco.com.hk
Website: www.diancogroup.com

Floor Plan



Legend



Toilet



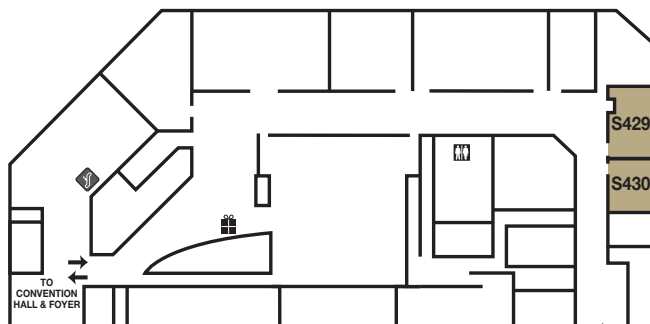
Escalator



Coffee Redemption Counter

Rapaport Kiosk

Meeting Rooms S221-S230 (Level 2)



Legend



Toilet



Escalator



Gifts Redemption Counter

↑
TO HALL 5
↓
↑
TO HALL 3, MEETING ROOMS S221-S230, CONVENTION HALL & FOYER

Meeting Rooms S429-S430 (Level 4)